



YOUR CONSTRUCTION TECHNOLOGY PROVIDER

Field Reference Guides

EARTHWORKS Compactor Version 2.9

SITECH XXX
SITECH-XXX.COM



System: Earthworks Compactor

Version: 2.9

<u>Training Guides</u>	<u>Page #</u>
Starting Earthworks	3
Dashboard	4
Select Project, Design and Measured Data	5
Select Project, Design and Measured Data: VCL	6
Create Project	7
Earthworks Screen	8
Work Screen Interface	9
Work Screen Setup	10
Text Ribbon Setup	13
Drum Manager	14
Elevation Mapping Adjustment	15
Import Data USB	16
Export Data USB	17
Verify System Accuracy	18
Vertical Offset / Memories	19
Horizontal Offset	21
Cut Fill Mapping	23
Compaction Mapping	24
Record Point	25
Delete / Edit Point	26
Navigate to Point	27
3D Line Guidance	28
Lane Guidance	29
Surface Manager	30
Layers Manager	31
Change Radio Network	32

SITECH TECHNOLOGY DEALER
Field Reference Guides

System: Earthworks Compactor

Version: 2.9

<u>Training Guides</u>	<u>Page #</u>
Starting Earthworks	3
Dashboard	4
Select Project, Design and Measured Data	5
Select Project, Design and Measured Data: VCL	6
Create Project	7
Earthworks Screen	8
Work Screen Interface	9
Work Screen Setup	10
Text Ribbon Setup	13
Drum Manager	14
Elevation Mapping Adjustment	15
Import Data USB	16
Export Data USB	17
Verify System Accuracy	18
Vertical Offset / Memories	19
Horizontal Offset	21
Cut Fill Mapping	23
Compaction Mapping	24
Record Point	25
Delete / Edit Point	26
Navigate to Point	27
3D Line Guidance	28
Lane Guidance	29
Surface Manager	30
Layers Manager	31
Change Radio Network	32

Training Acknowledgement

SITECH Copy

Customer Signature

Date

SITECH Representative

Date



System: Earthworks Compactor

Version: 2.9

<u>Training Guides</u>	<u>Page #</u>
Starting Earthworks	3
Dashboard	4
Select Project, Design and Measured Data	5
Select Project, Design and Measured Data: VCL	6
Create Project	7
Earthworks Screen	8
Work Screen Interface	9
Work Screen Setup	10
Text Ribbon Setup	13
Drum Manager	14
Elevation Mapping Adjustment	15
Import Data USB	16
Export Data USB	17
Verify System Accuracy	18
Vertical Offset / Memories	19
Horizontal Offset	21
Cut Fill Mapping	23
Compaction Mapping	24
Record Point	25
Delete / Edit Point	26
Navigate to Point	27
3D Line Guidance	28
Lane Guidance	29
Surface Manager	30
Layers Manager	31
Change Radio Network	32

Training Acknowledgement

Customer Copy

Customer Signature

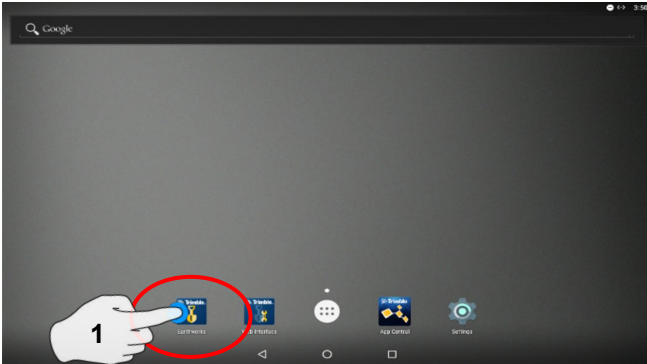
Date

SITECH Representative

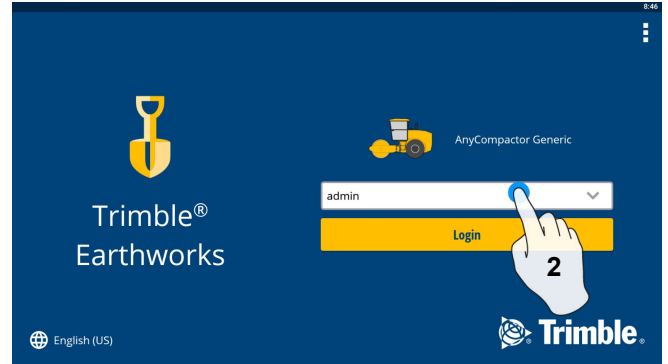
Date



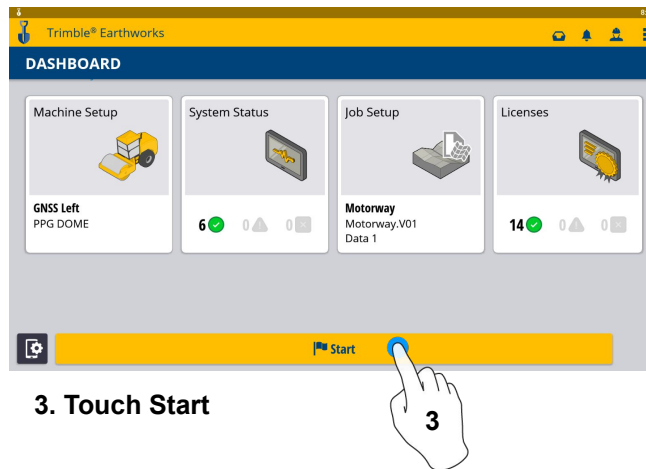
Starting Earthworks



1. Touch  Earthworks Icon

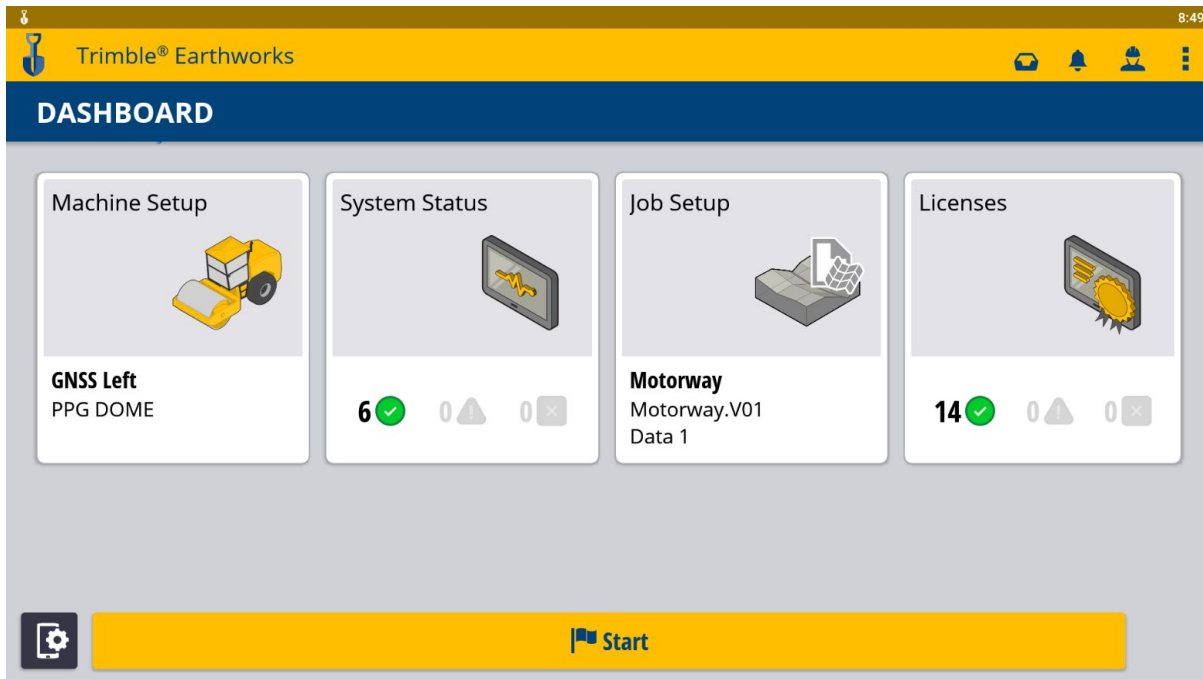


2. Select operator



3. Touch Start

Dashboard

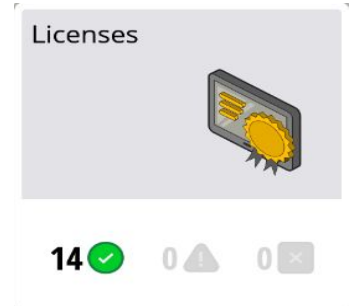
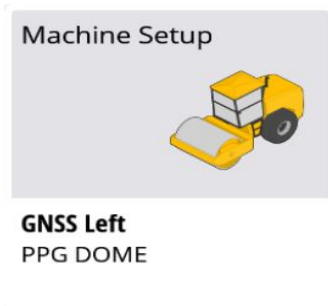


Machine Setup

System Status

Job Setup

Licenses



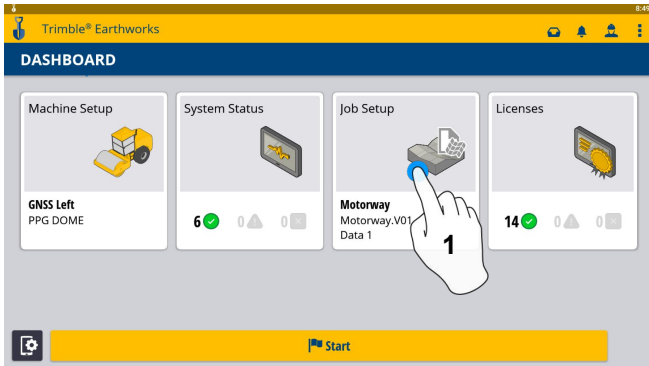
- Position Source
- Correction Source

- Status of Devices
- Component Warnings

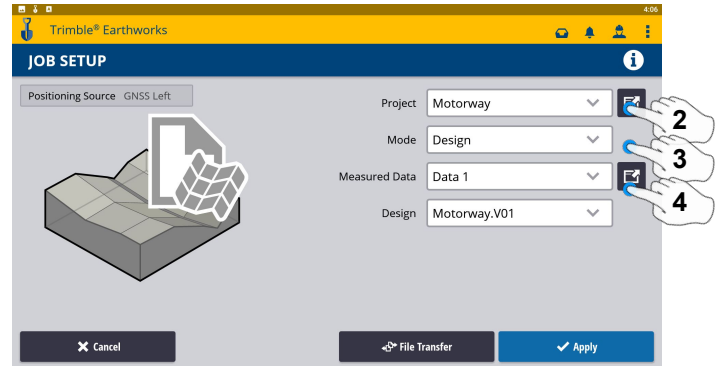
- Select or Create Project
- Select or Create Design
- Create Measured Data Folder

- EC520 License
- TD520 License
- GNSS Receiver License

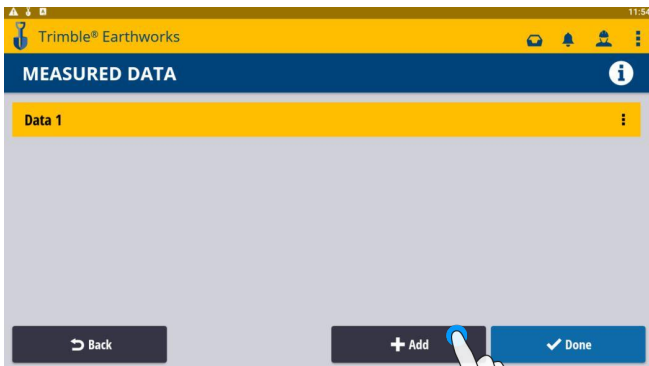
Select Project, Design and Measured Data



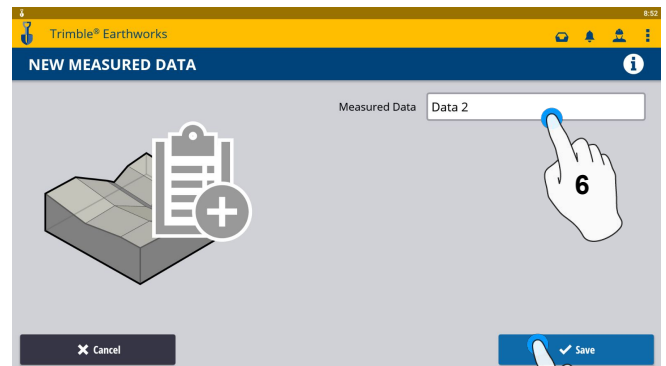
1. Touch Job Setup



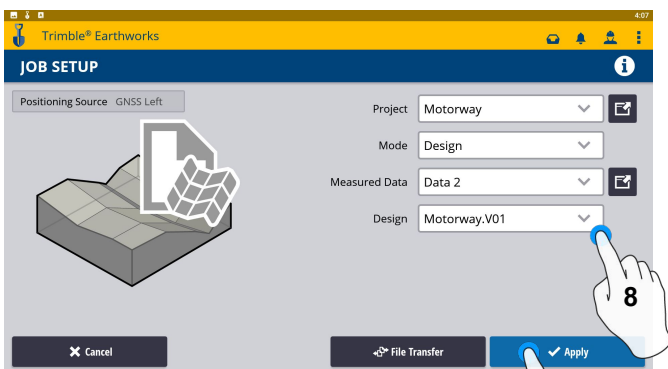
2. Select Project
3. Select Mode
4. Select Measured Data (Create New)



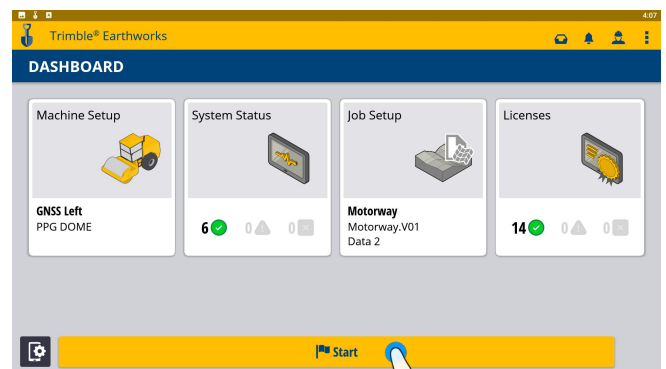
5. Touch Add



6. Type in New Measured Data Name
7. Touch Save

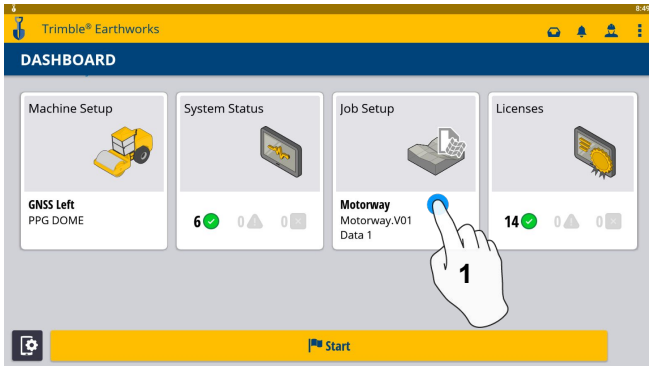


8. Select Design
9. Touch Apply

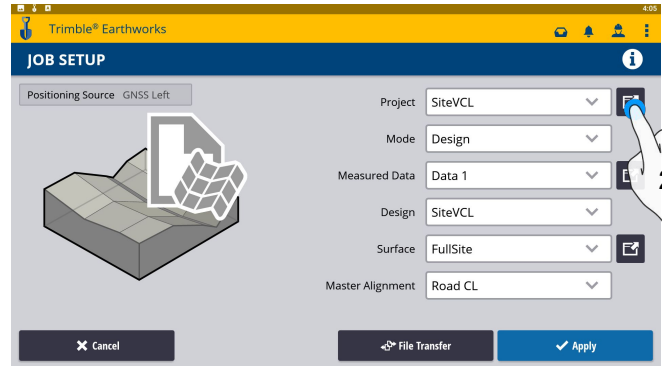


10. Touch Start

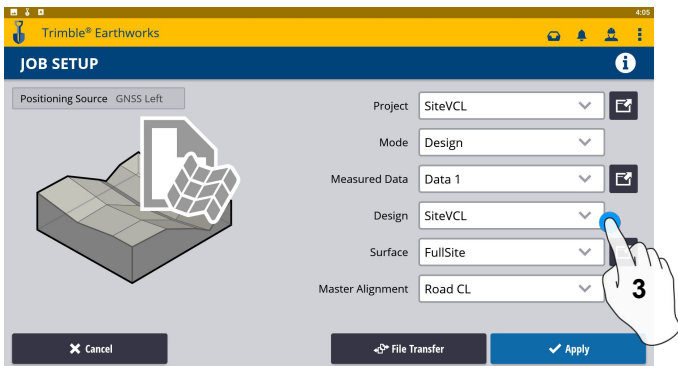
Select Project, Design, and Measured Data: VCL



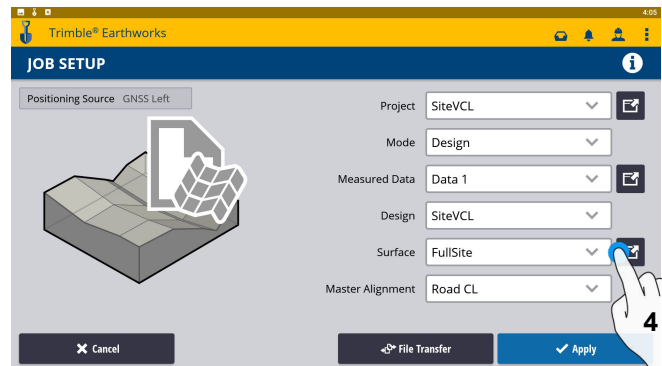
1. Touch Job Setup



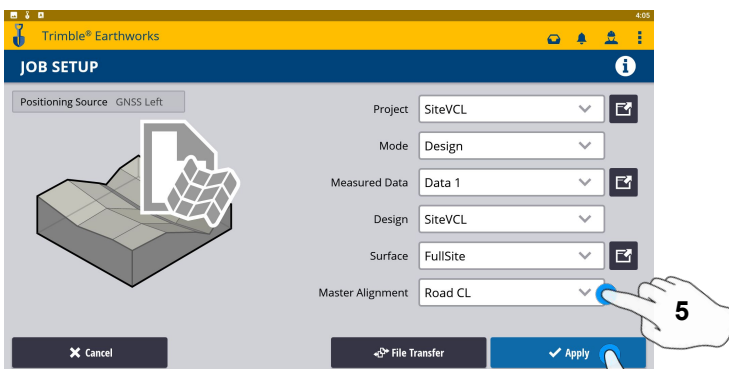
2. Touch Project- Select Site VCL



3. Touch Design- Select SiteVCL

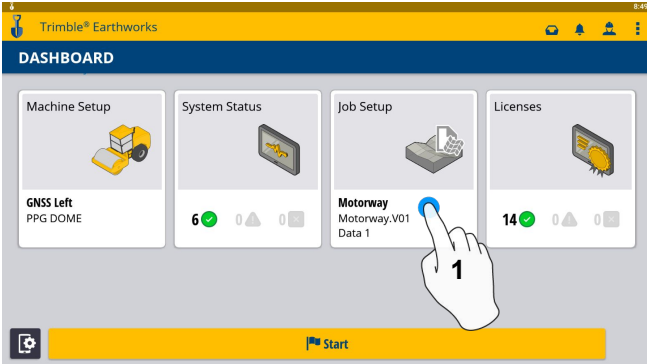


4. Touch Surface- Select Surface

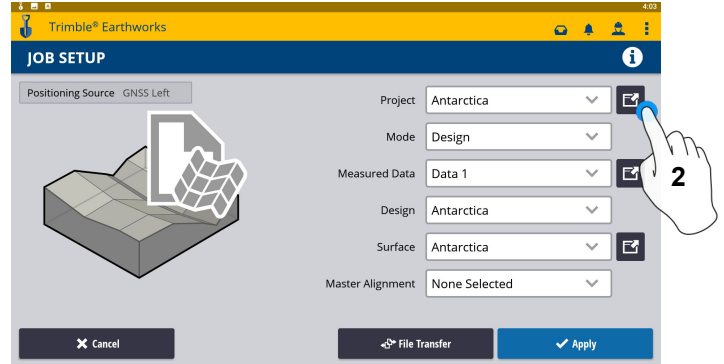


5. Touch Master Alignment- Select Road CL
6. Touch Apply

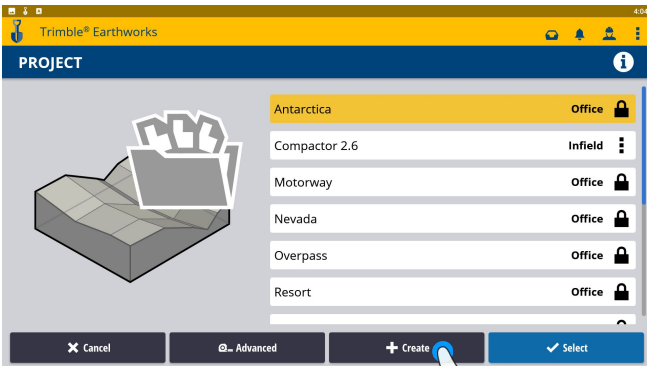
Create Project



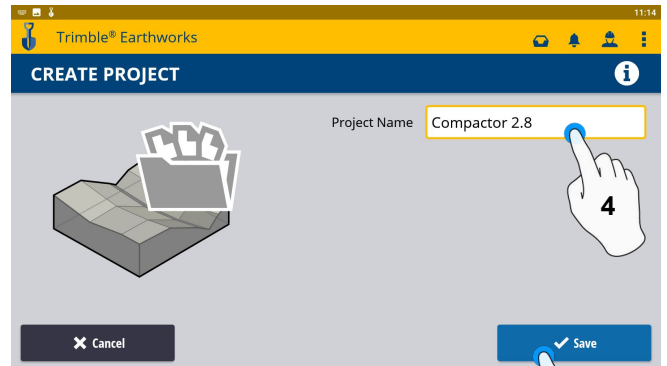
1. Touch Job Setup



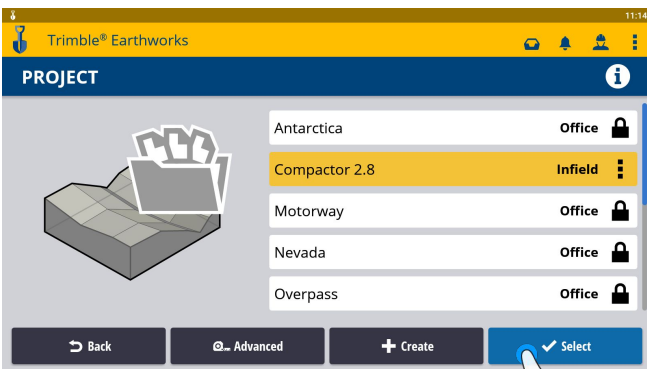
2. Touch Project



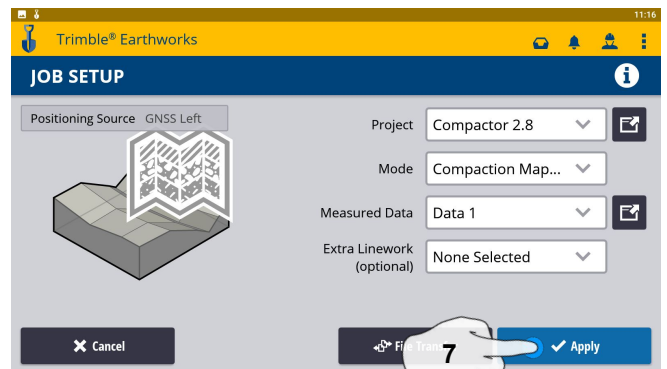
3. Touch Create



4. Enter Project Name
5. Touch Save



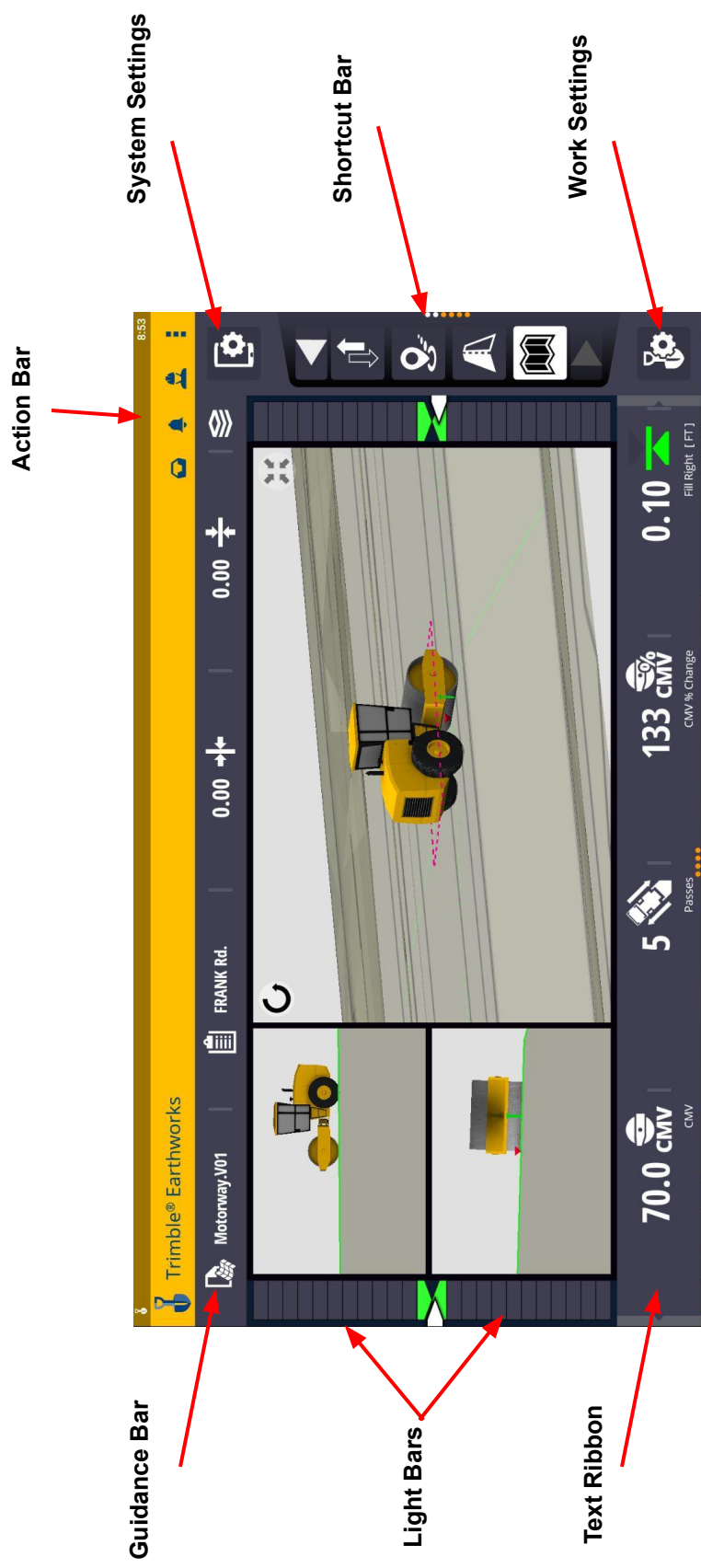
6. Touch Select



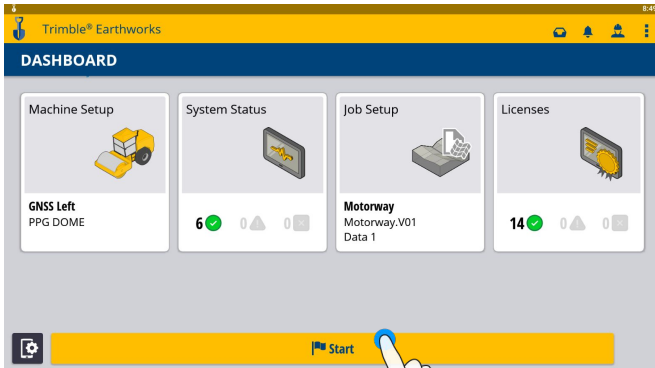
7. Touch Apply
8. Touch Start



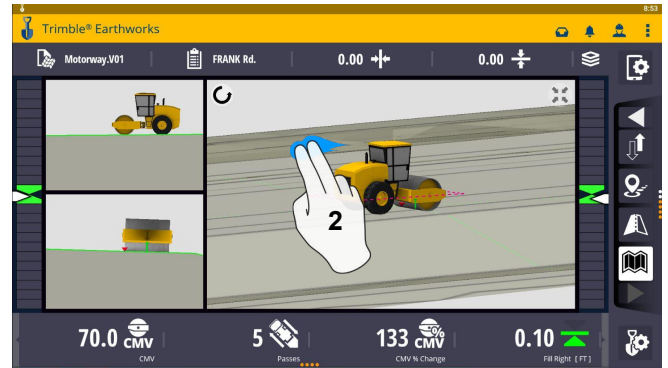
Earthworks Screen



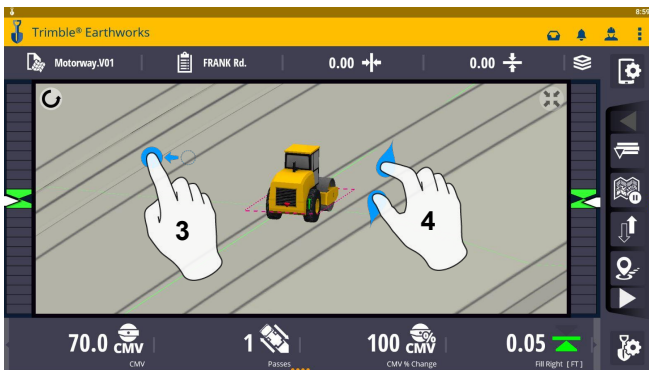
Work Screen Interface



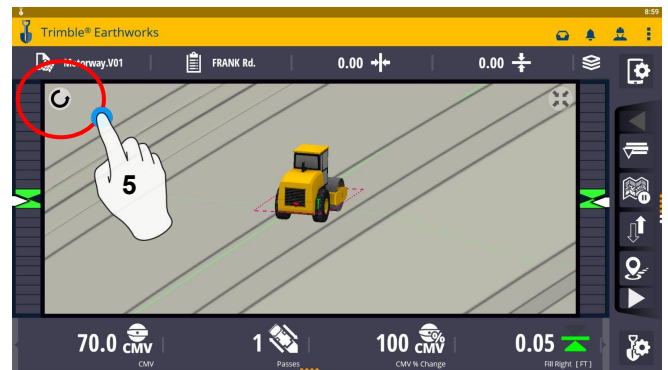
1. Touch Start



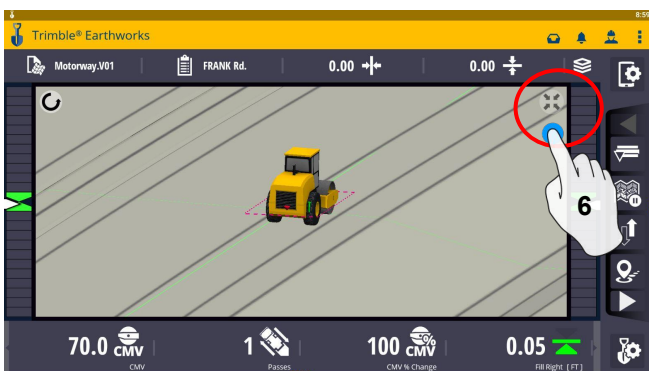
2. 2 Finger swipe to change views



3. Drag to pan
4. Pinch-Spread to zoom

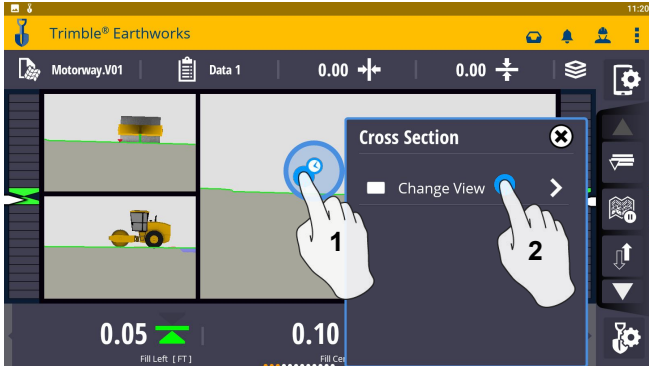


5. Touch to select Pan or Rotate

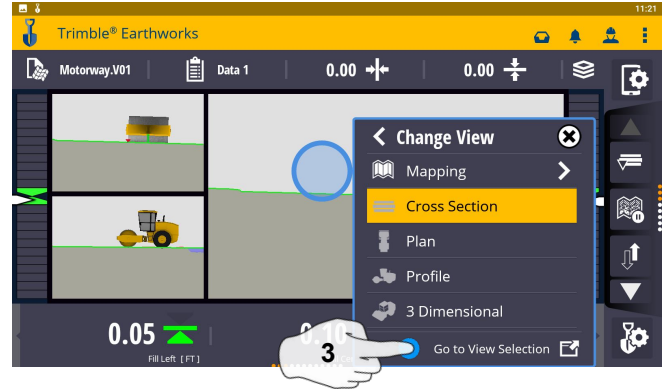


6. Touch to re-center

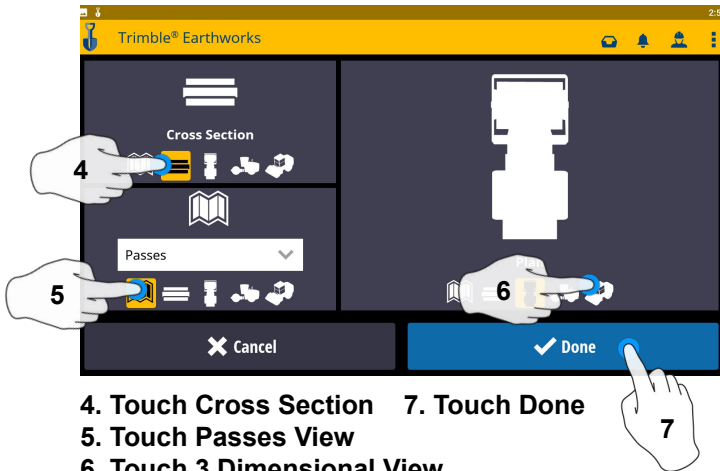
Work Screen Setup



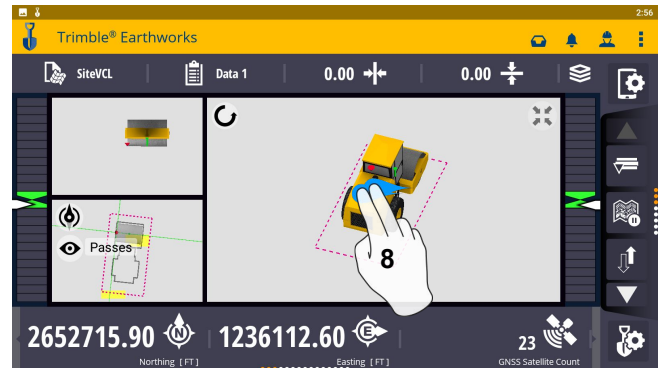
1. Touch and hold
2. Touch Change View



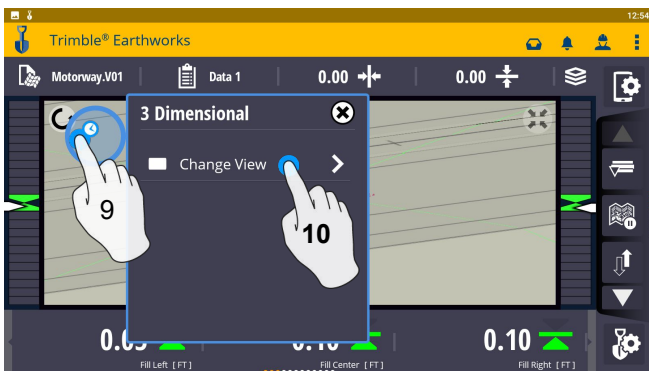
3. Touch Go to View Selection



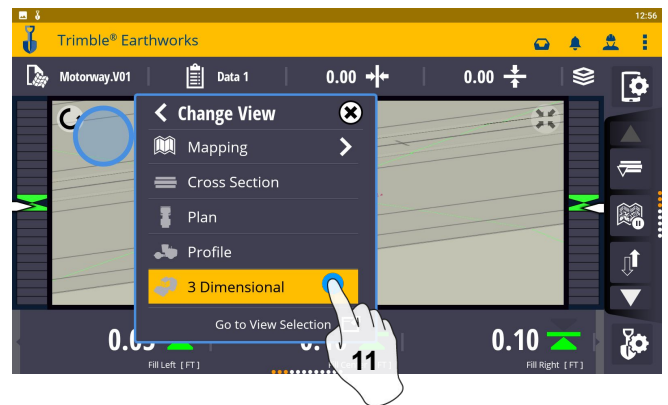
4. Touch Cross Section
5. Touch Passes View
6. Touch 3 Dimensional View
7. Touch Done



8. 2 Finger Swipe to Single View

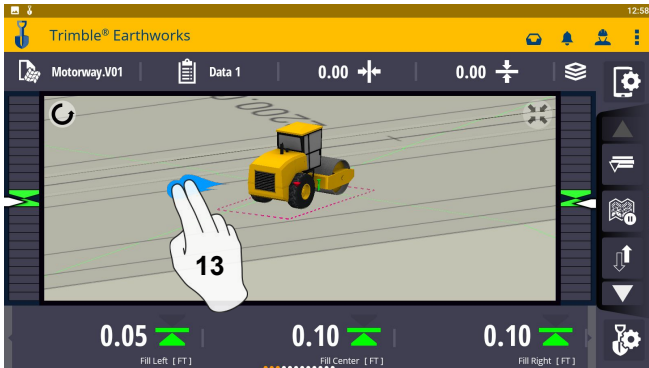


9. Touch and hold
10. Touch Change View

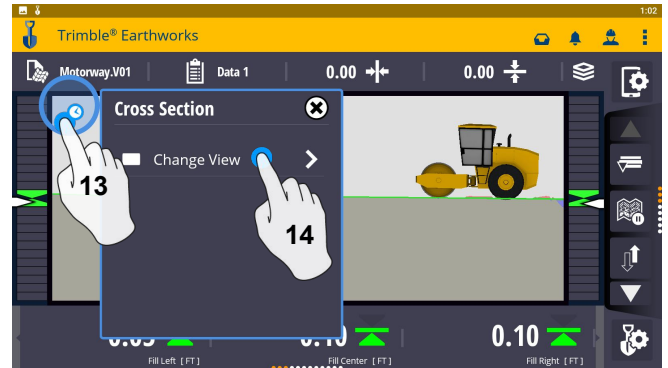


11. Select 3 Dimensional

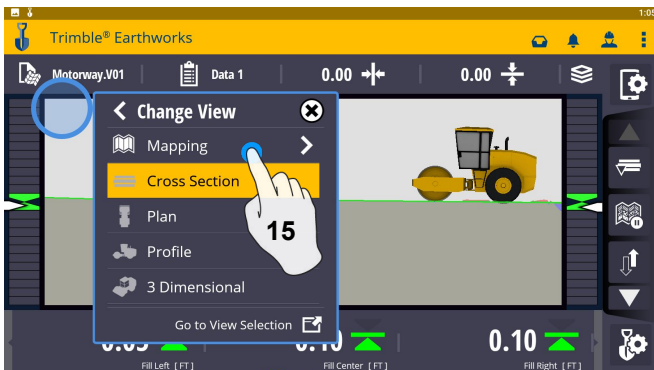
Work Screen Setup Cont:



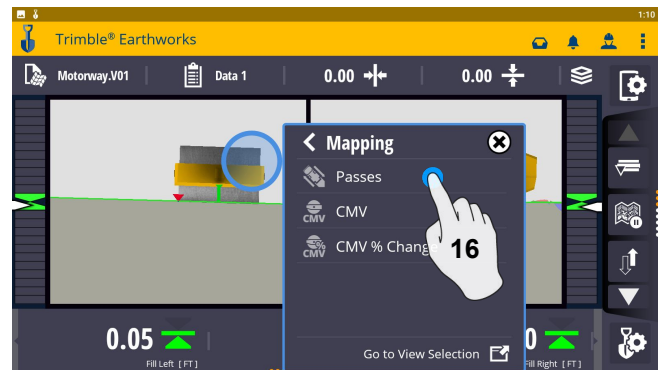
12. 2 Finger swipe to 2 Screen View



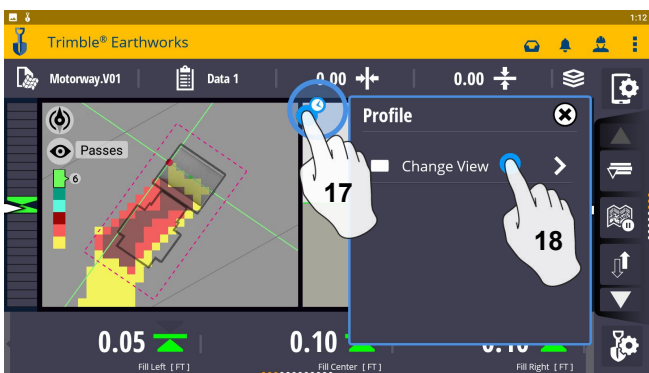
13. Touch and hold
14. Touch Change View



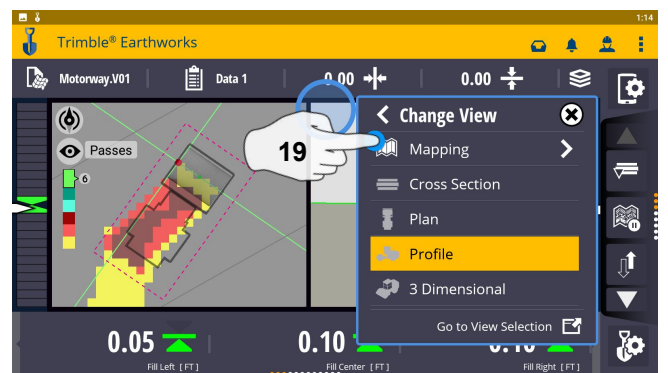
15. Touch Mapping



16. Touch Passes

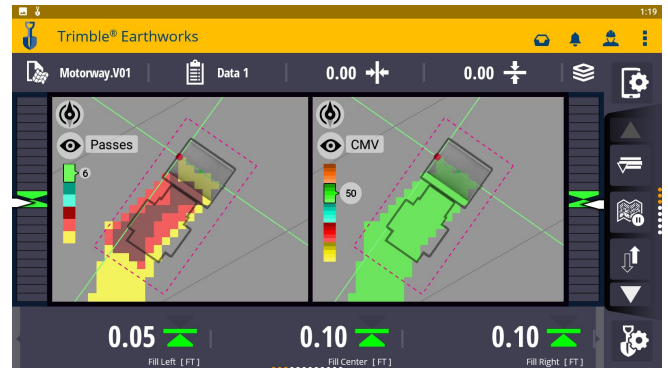
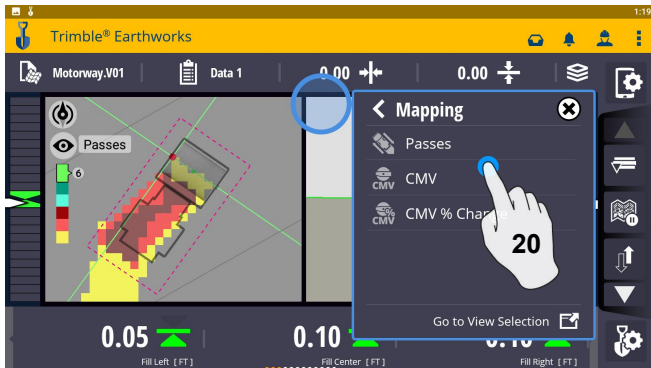


17. Touch and hold
18. Touch Change View



19. Touch Mapping

Work Screen Setup Cont:

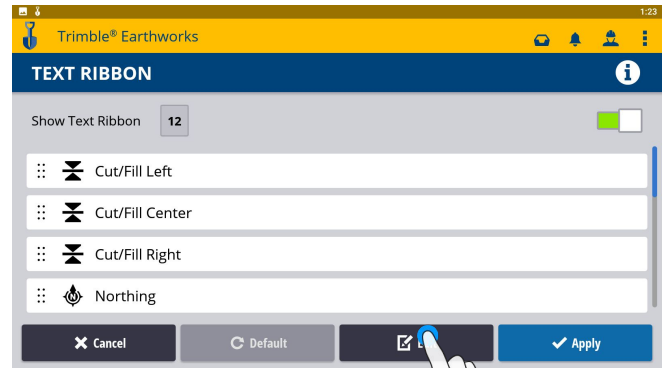


20. Touch CMV

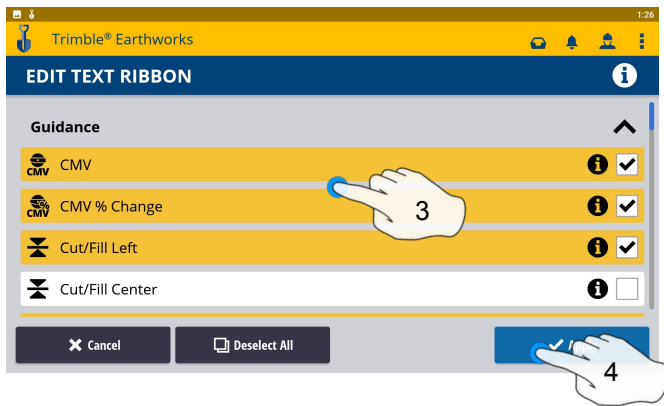
Text Ribbon Setup



1. Touch and Hold Text Ribbon



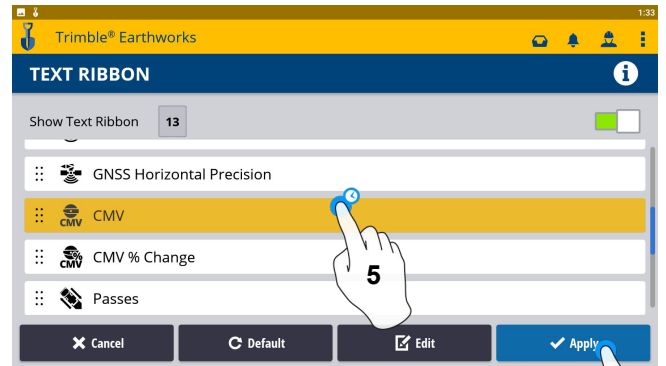
2. Touch Edit



3. Touch each Text Item

- CMV
- Passes
- CMV % Change
- Cut/Fill Left
- Cut/Fill Right
- Frequency
- RMV
- Vibration
- Amplitude
- Northing
- Easting
- Elevation
- Station
- Horizontal GNSS Precision
- Vertical GNSS Precision
- Satellite Count

4. Touch Apply

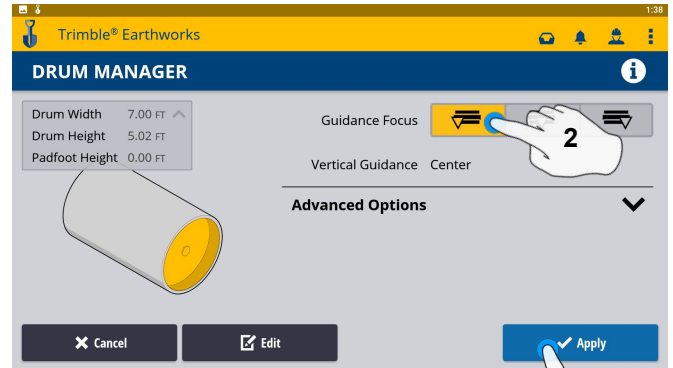


5. Touch-Hold-Drag to change position
6. Touch Apply

Drum Manager



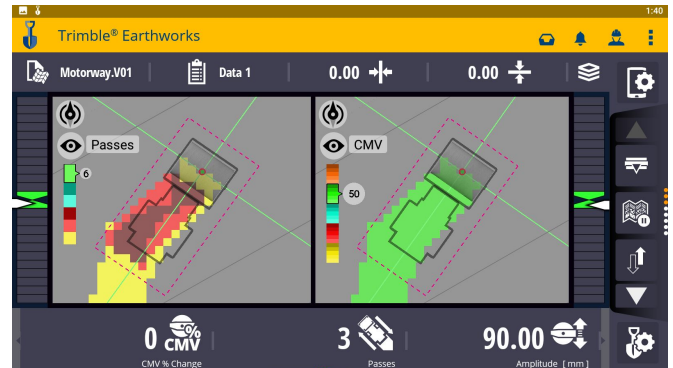
1. Touch and Hold Drum Manager Icon



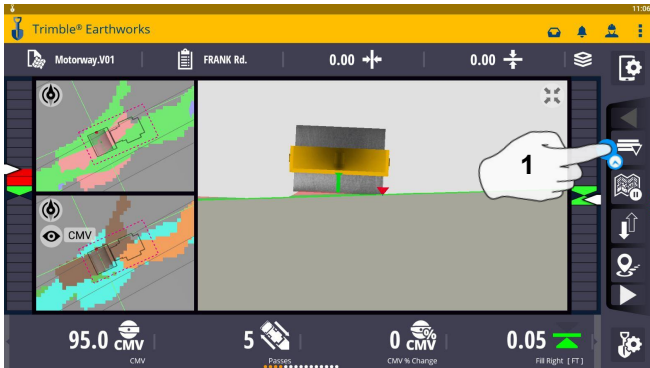
2. Touch Focus Option
3. Touch Apply



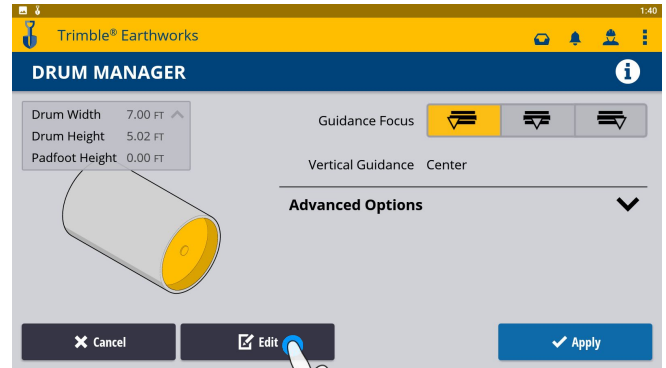
4. Touch Drum Manager to change focus point



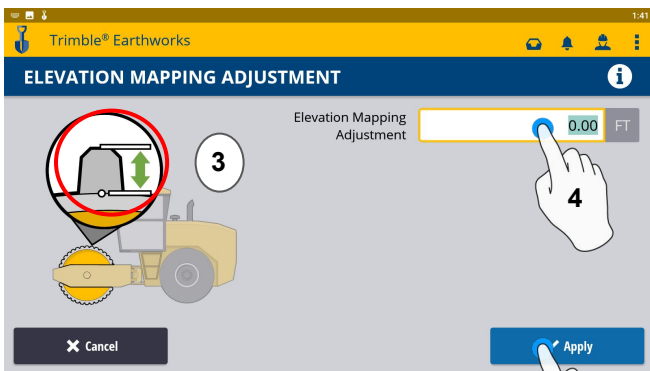
Elevation Mapping Adjustment



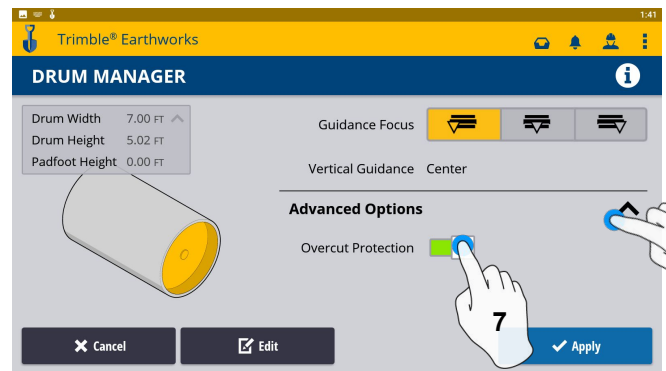
1. Touch and hold Focus Icon



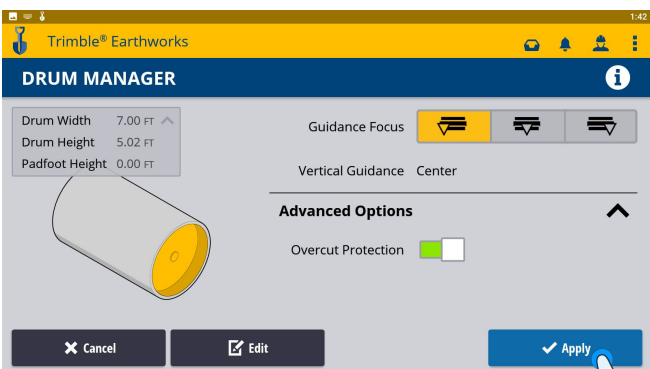
2. Touch Edit



3. Measure the height of the pad foot
4. Enter the measured height
5. Touch Save

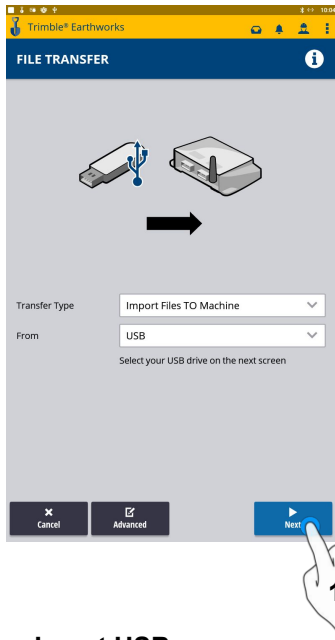


6. Touch Advanced Options
7. Touch Overcut Protection

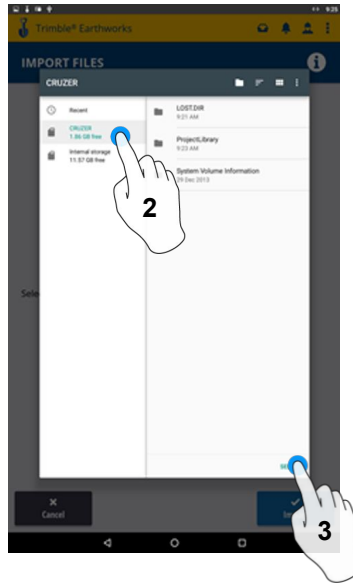


8. Touch Apply

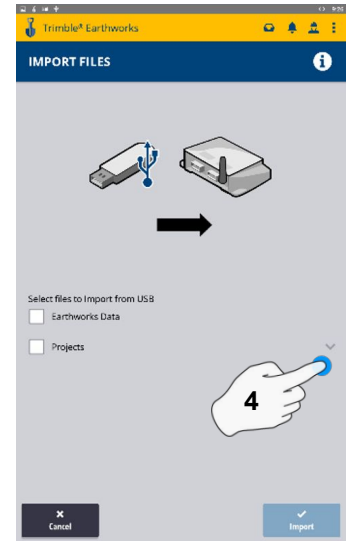
Import Data With USB



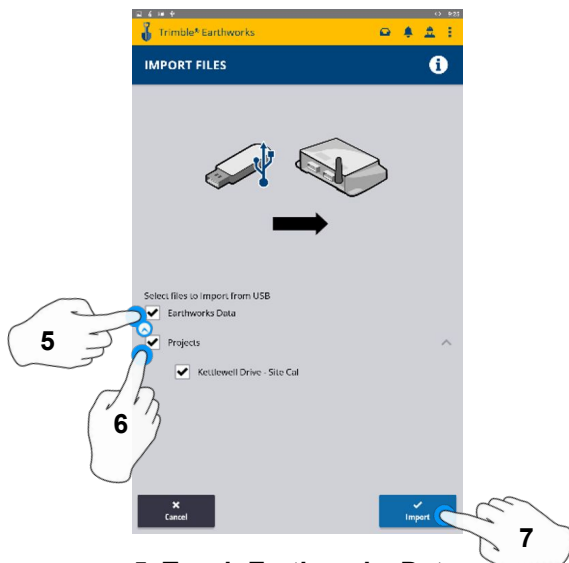
Insert USB
1. Touch Next



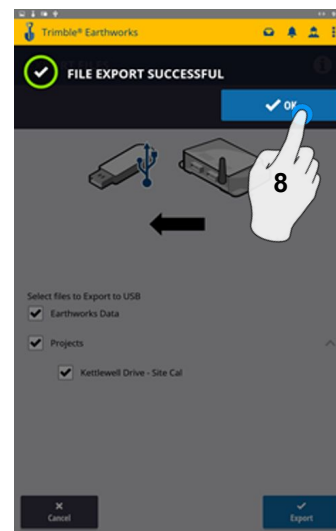
2. Touch USB
3. Touch Select



4. Touch "V"

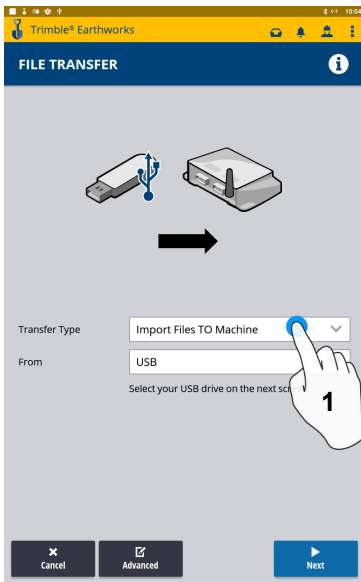


5. Touch Earthworks Data
6. Touch Project
7. Touch Import

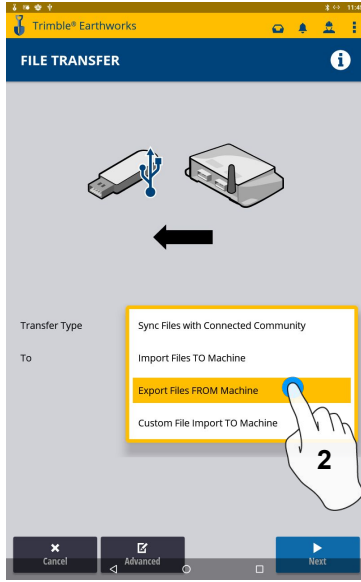


8. Touch OK

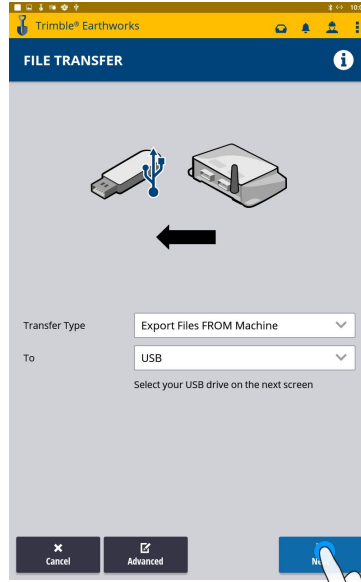
Export Data With USB



Insert USB
1. Touch Transfer Type



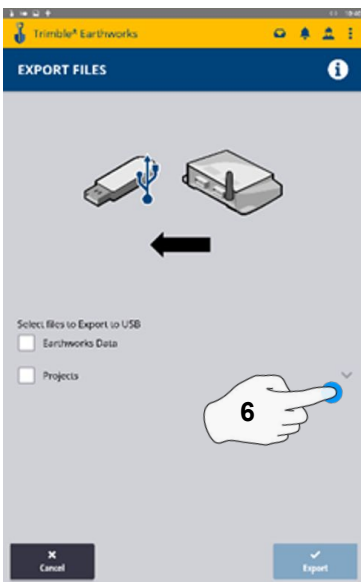
2. Touch Export Files



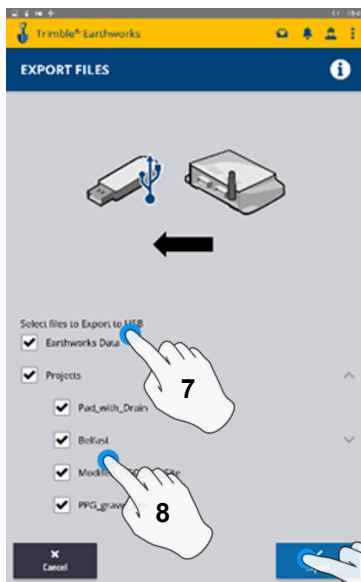
3. Touch Next



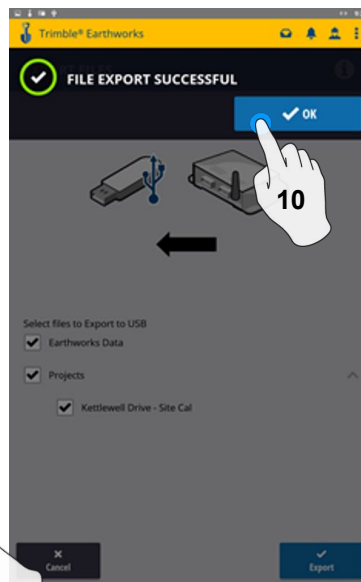
4. Touch USB
5. Touch Select



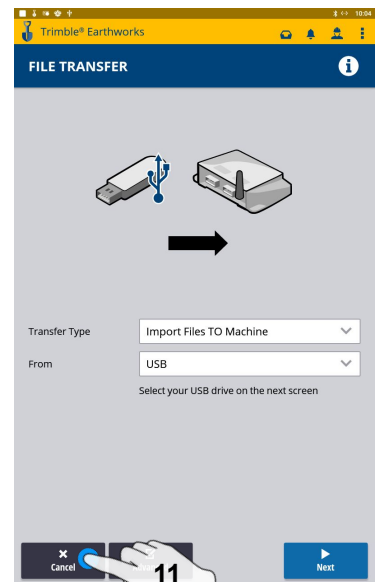
6. Touch "V"



7. Touch Earthworks Data
8. Touch Projects
9. Touch Export



10. Touch OK



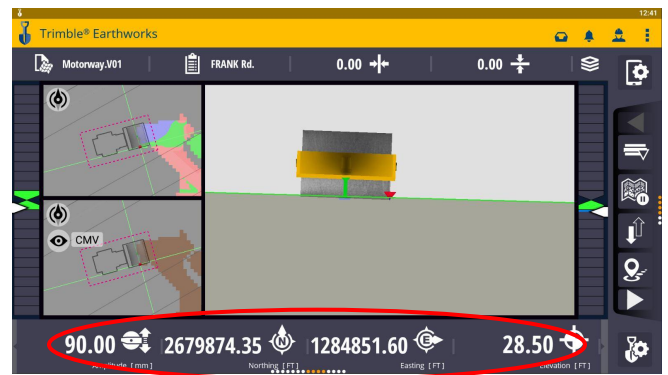
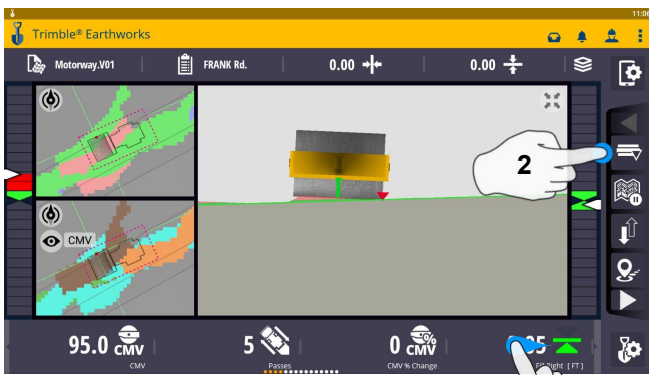
11. Touch Cancel
Remove USB

Verify System Accuracy

Verify the system accuracy by checking into a bench



Position the drum over the bench point

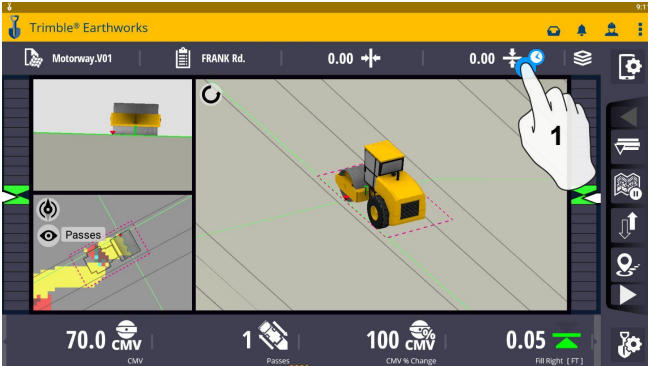


1. Swipe ribbon to view, Northing, Easting, Elevation
2. Touch blade focus to match verification location

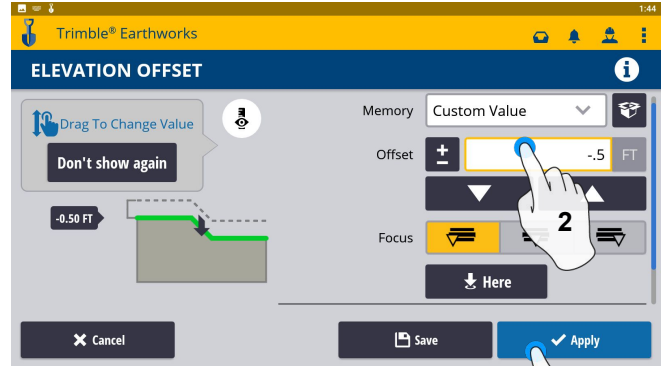
3. Verify Accuracy Northing, Easting, Elevation

See Supervisor if Northing, Easting and Elevation do not match Project tolerances

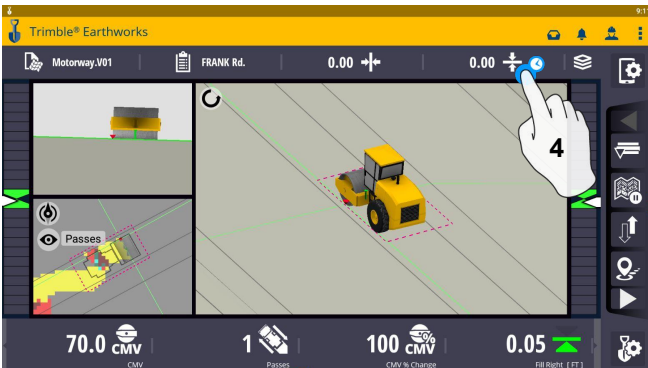
Vertical Offset / Memories



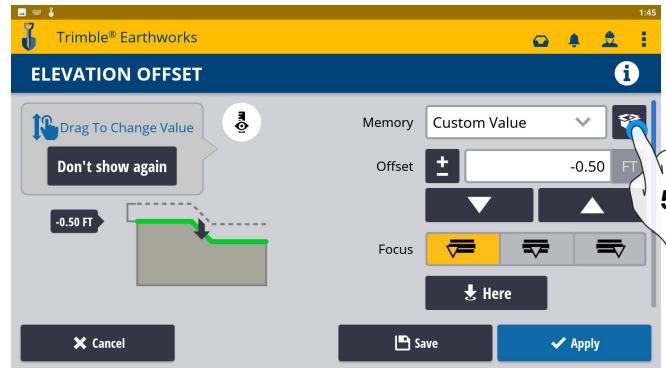
1. Touch and hold Vertical Offsets



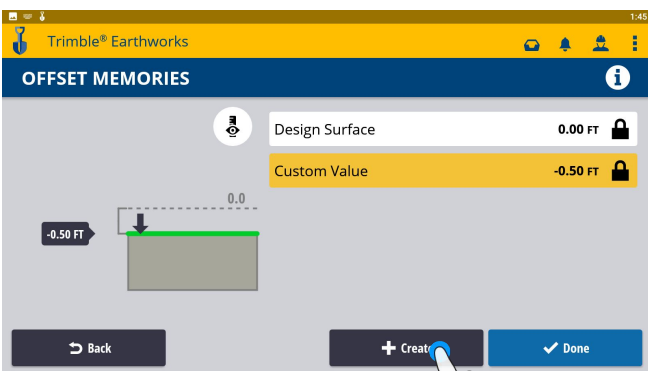
2. Enter Offset
3. Touch Apply to use immediately



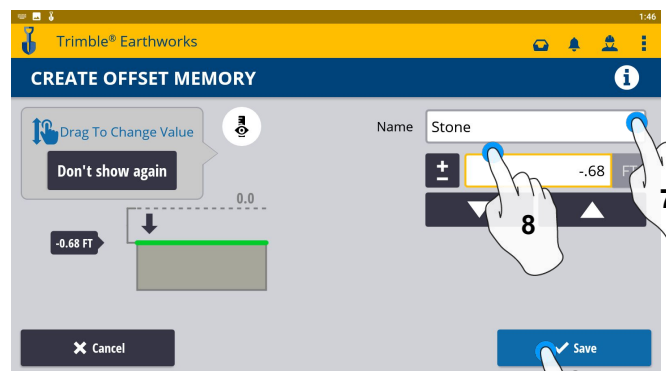
4. Touch and Hold Vertical Offsets



5. Touch memories

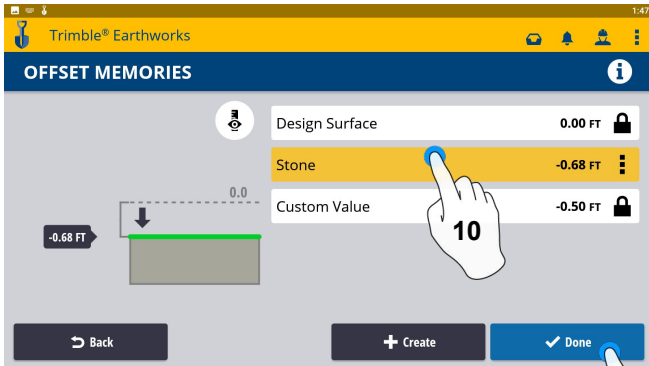


6. Touch Create

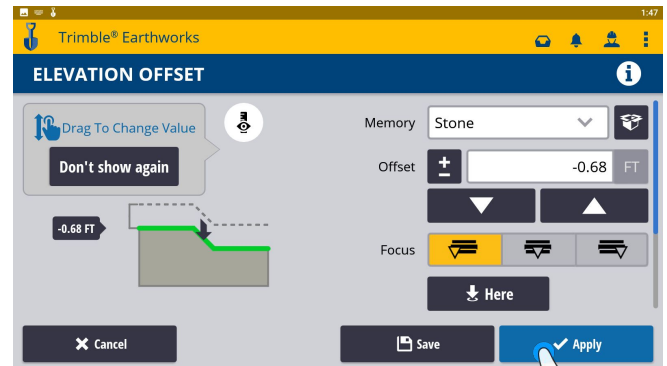


7. Enter Description
8. Enter value
9. Touch Save

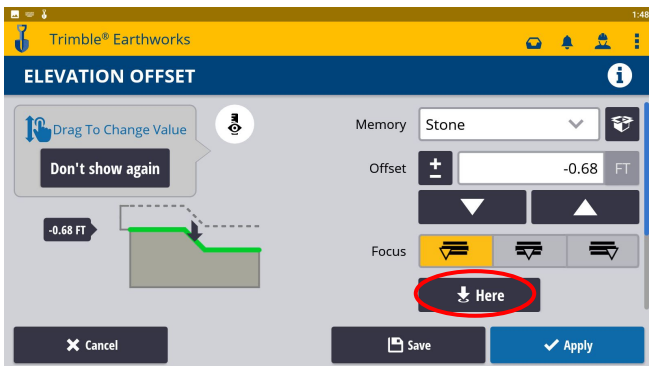
Vertical Offset / Memories Cont:



10. Select Memory
11. Touch Done

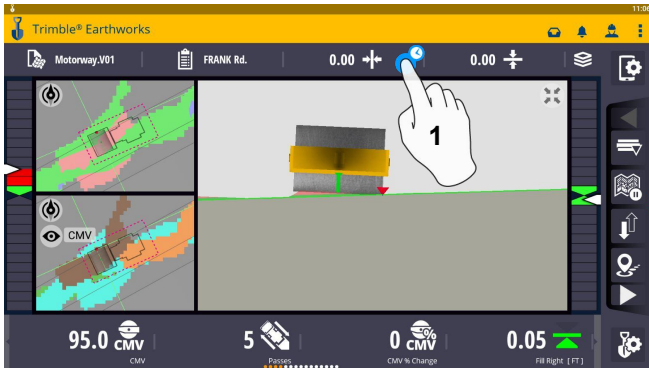


12. Touch Apply

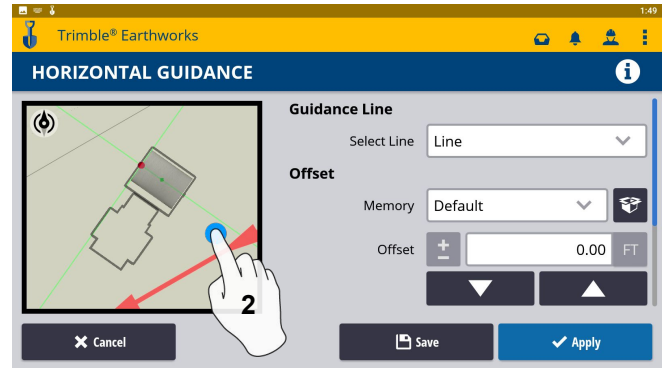


The here button will automatically set the vertical offset according to your current cut/fill according to your selected focus option.

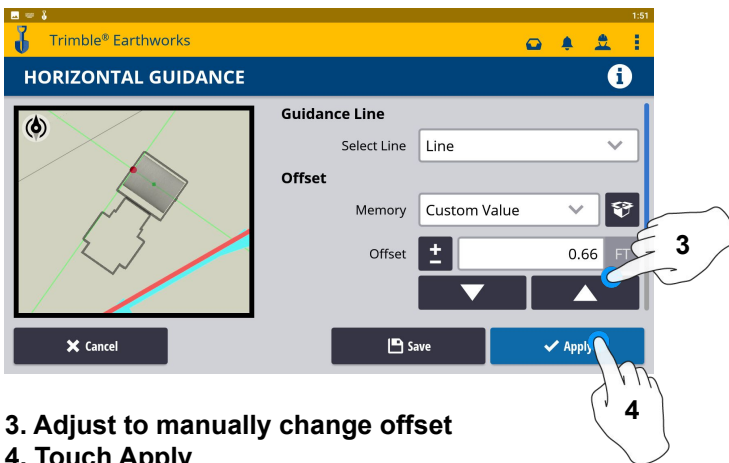
Horizontal Offset



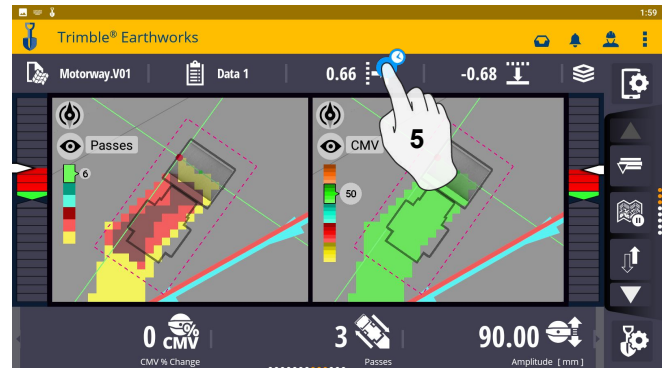
1. Touch and hold Horizontal Offset



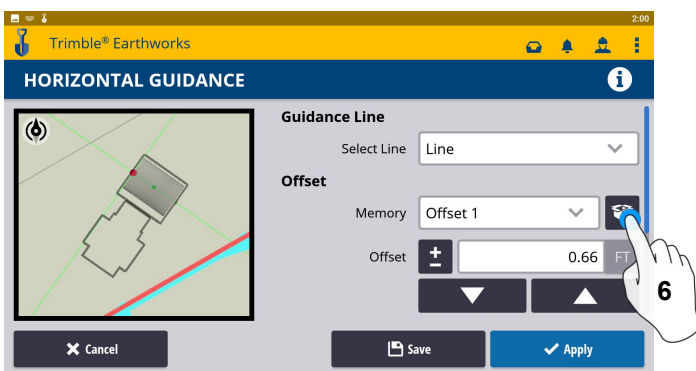
2. Touch and select Alignment



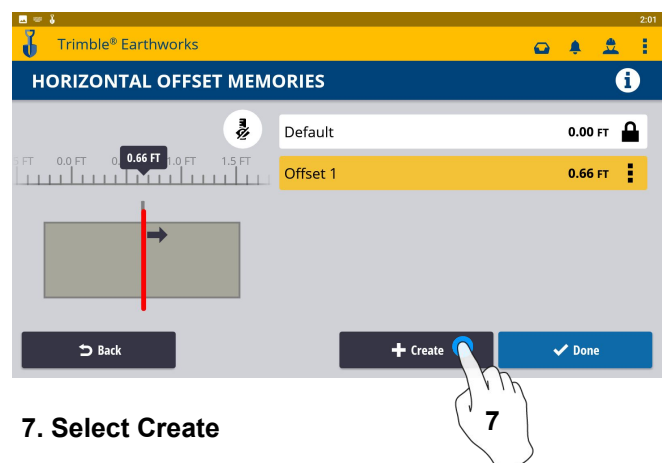
3. Adjust to manually change offset
4. Touch Apply



5. Touch and hold Horizontal Offset

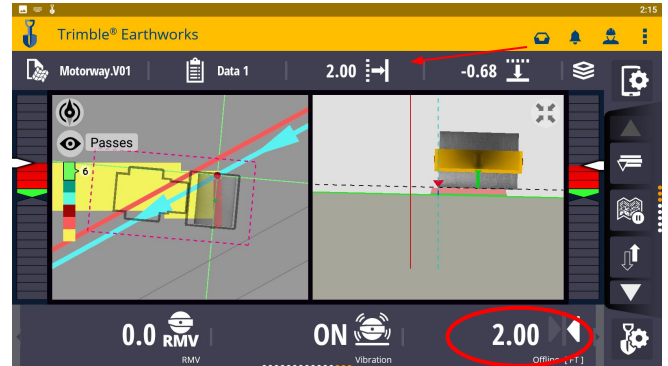
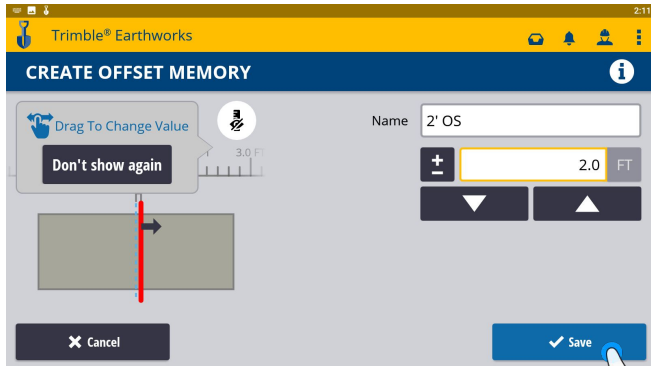


6. Touch Memories



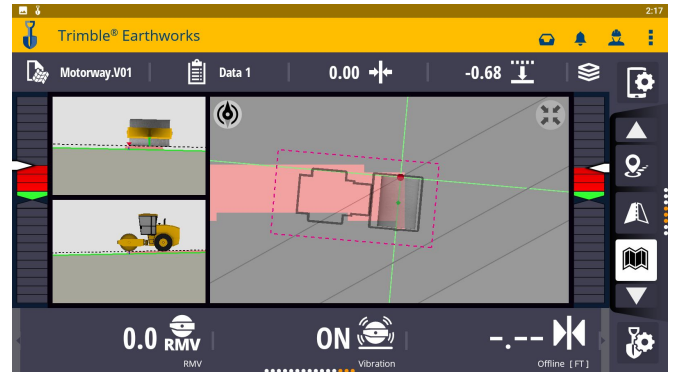
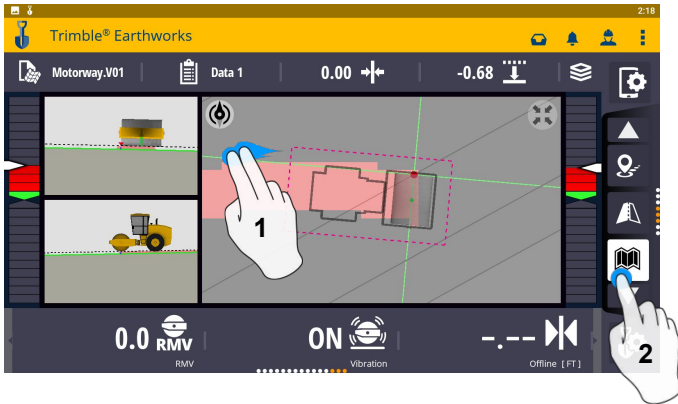
7. Select Create

Horizontal Offset / Memories Cont:



7. Enter Description
8. Enter value
9. Touch Save

Cut Fill Mapping



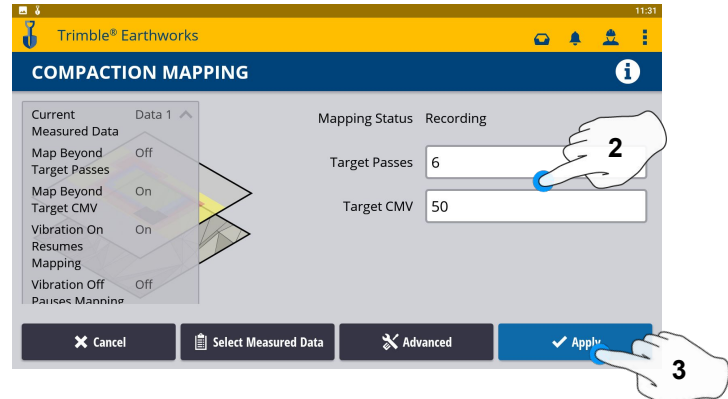
1. Two Finger Swipe to 3 screen view
2. Touch Mapping Icon to View

****Cut Fill Mapping will only be visible in Plan, Cross section, and Profile views****

Compaction Mapping



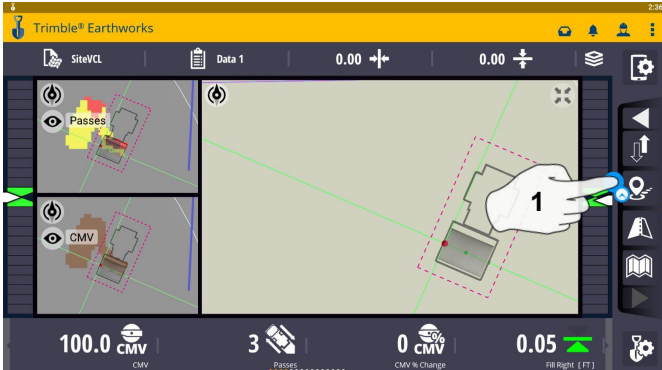
1. Touch and hold Compaction Mapping



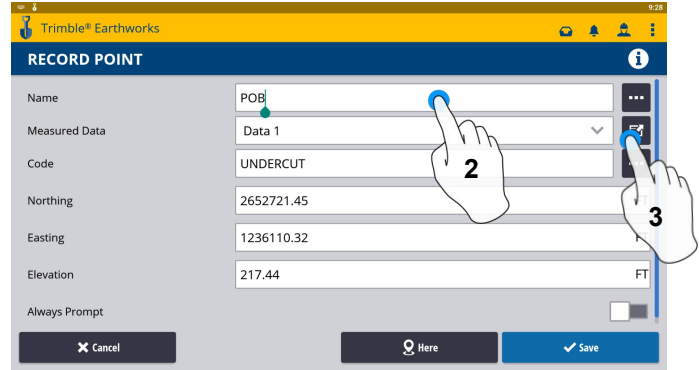
2. Enter applicable Target Passes and/or Target CMV
3. Touch Apply

****Compaction Mapping will only be visible in Mapping views****

Record Point

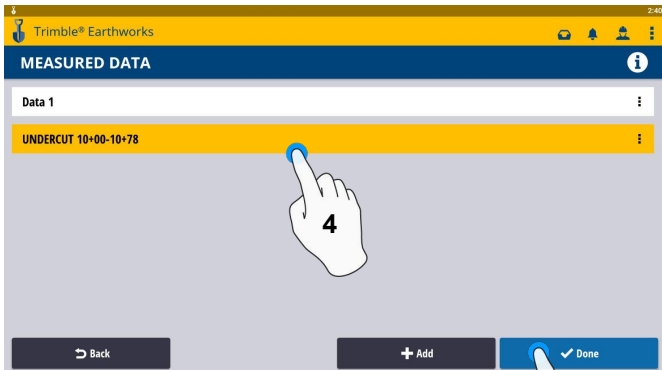


1. Touch and Hold Record Point



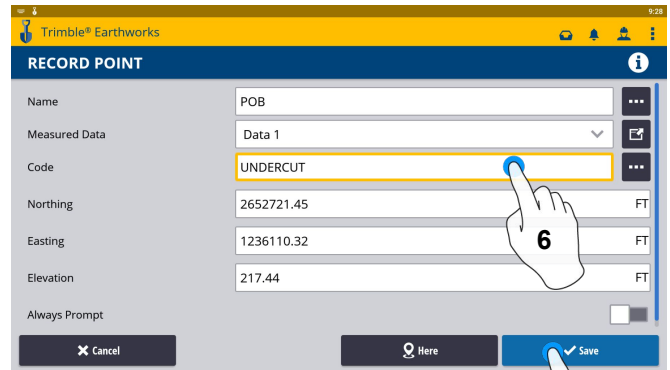
2. Touch to Edit Name

3. Touch and select Measured Data



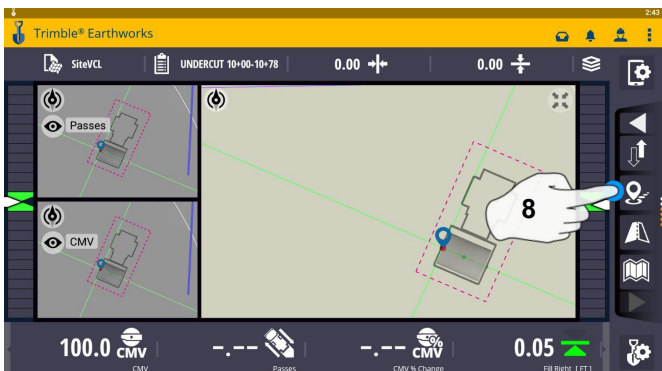
4. Select Work order for point location

5. Touch done



6. Type in Code

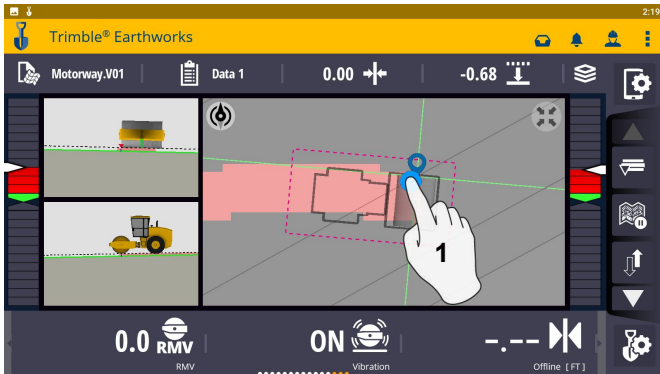
7. Touch Save



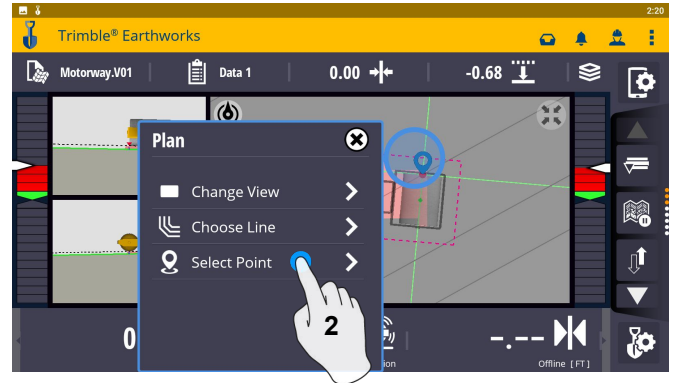
8. Touch Point Icon Records Point

**** Note- After recording a point, it will save automatically in Work Order Created during project setup. ****

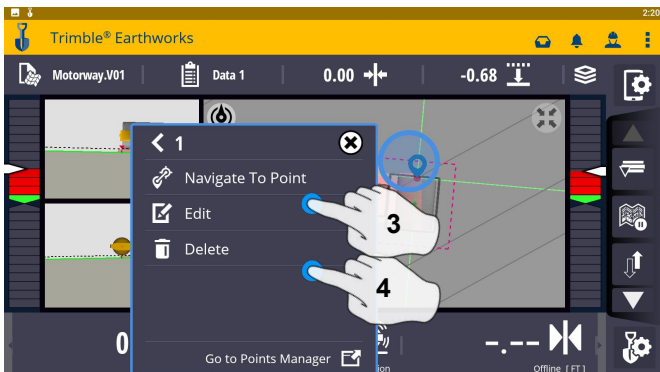
Delete / Edit Point



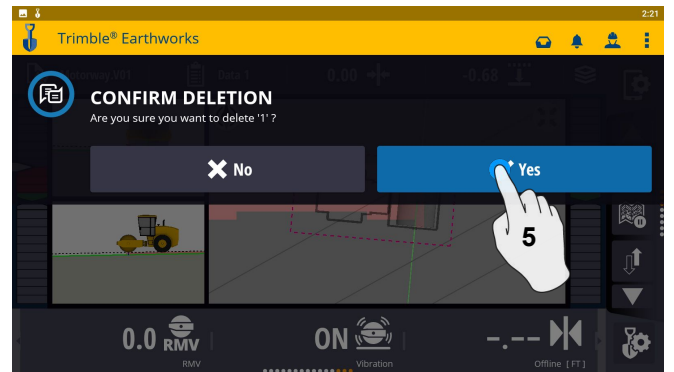
1. Touch and hold over point created



2. Touch Select Point

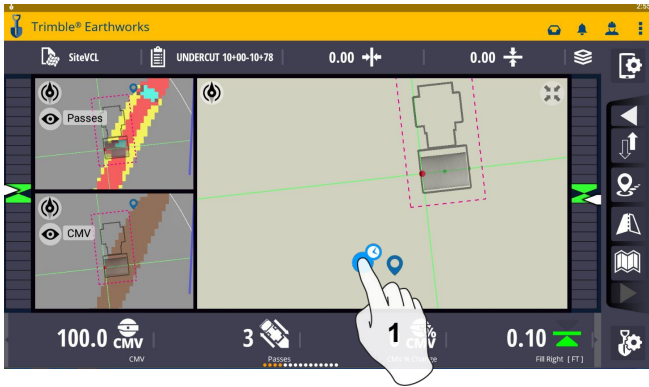


3. Edit point information if needed
4. Touch Delete

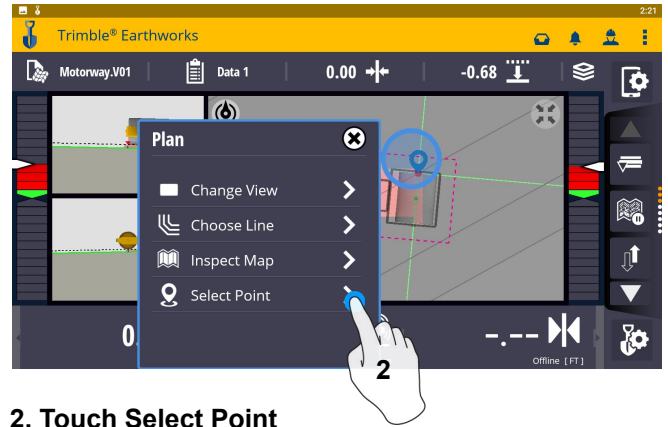


5. Touch Yes to Confirm Delete
(once deleted can no longer retrieve)

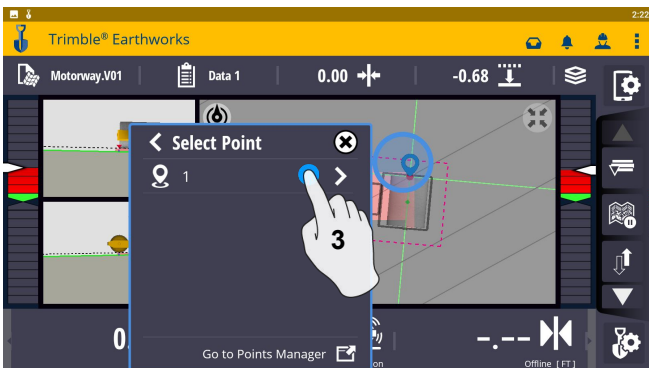
Navigate to Point



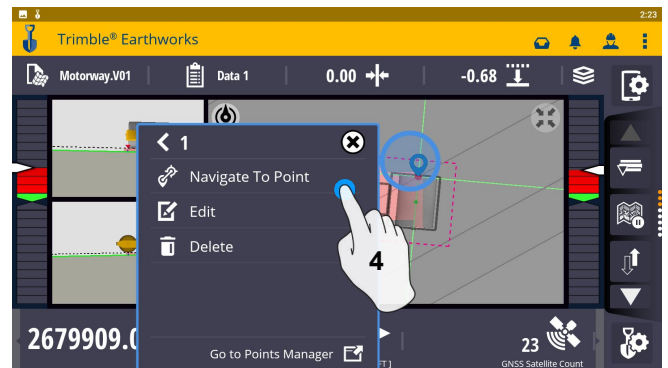
1. Touch and hold next to point



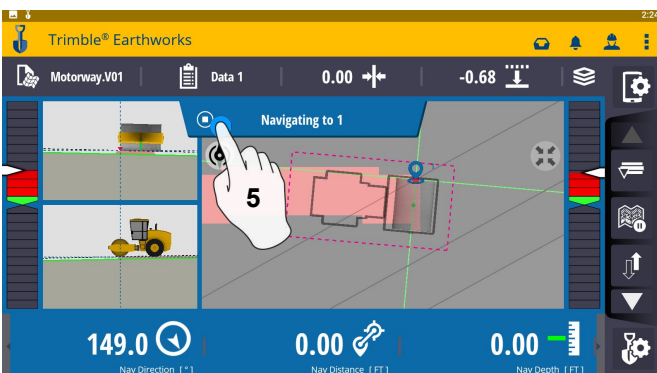
2. Touch Select Point



3. Touch Desired Point

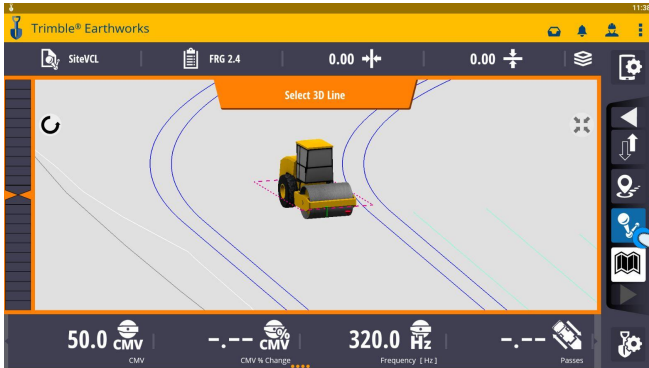


4. Touch Navigate To Point

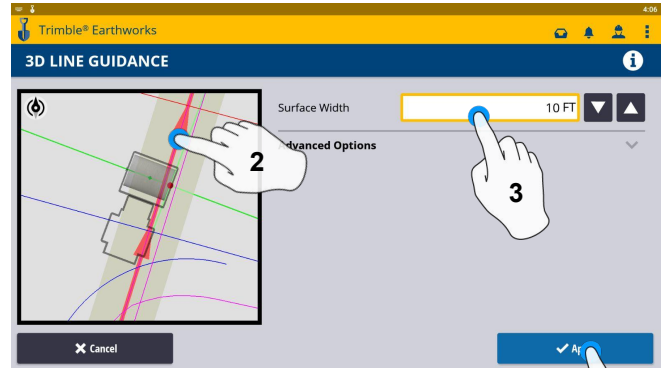


5. Touch Stop Icon once complete

3D Line Guidance



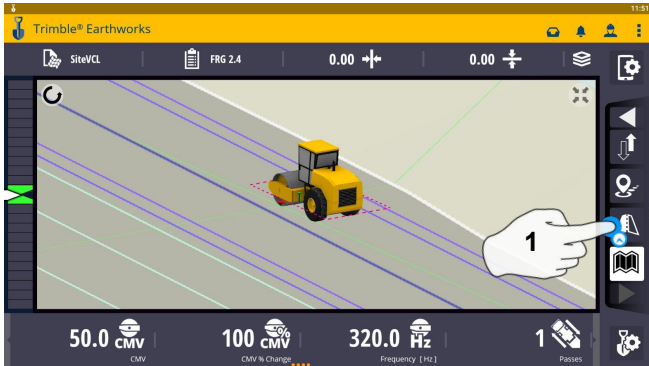
1. Touch 3D Line Select



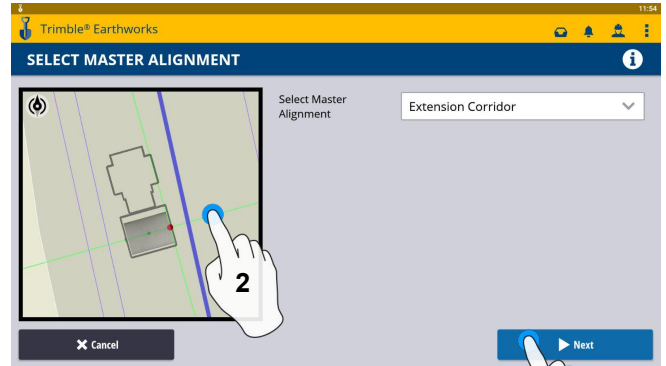
2. Touch 3D Line
3. Enter Surface Width
4. Touch Apply



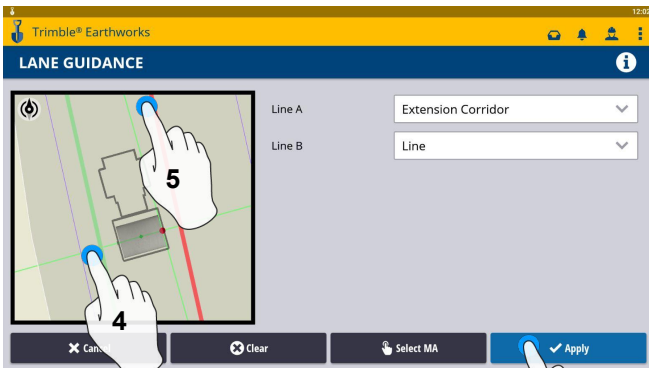
Lane Guidance



1. Touch and hold Lane Guidance



2. Touch an Alignment
3. Touch Next



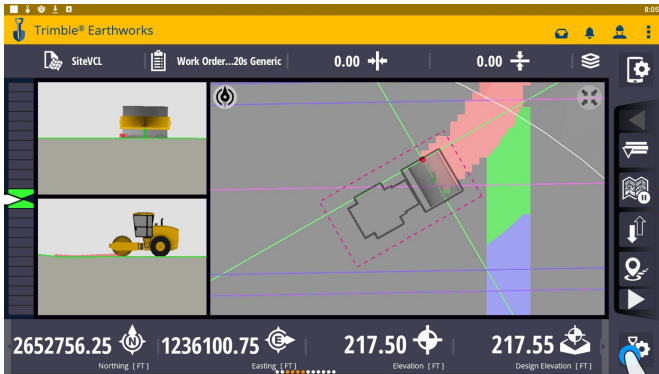
4. Touch Alignment A
5. Touch Alignment B
6. Touch Apply



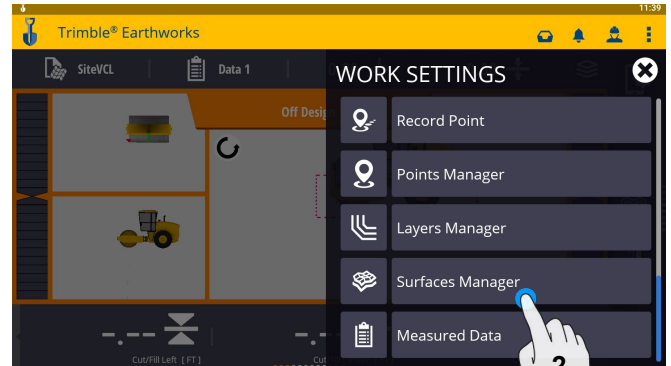
7. Touch Lane Guidance to Cancel

The slope between the two lines will be projected

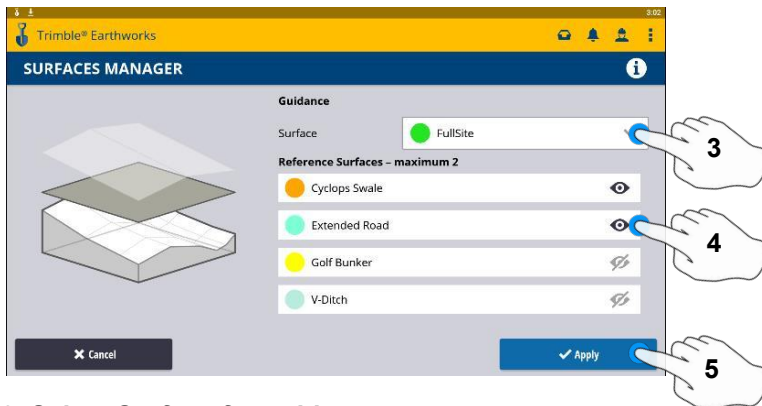
Surface Manager ** Will only work in VCL format Designs**



1. Touch work settings



2. Touch Surface Manager

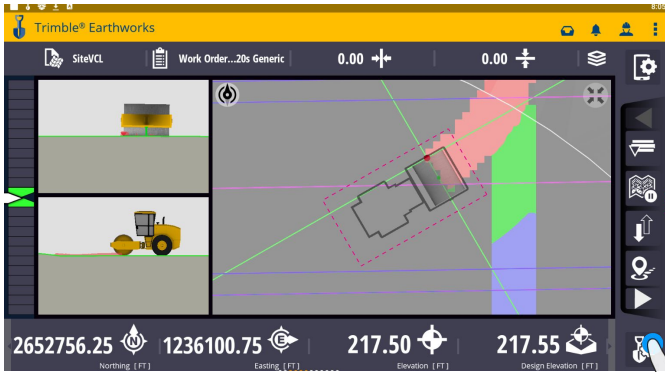


3. Select Surface for guidance

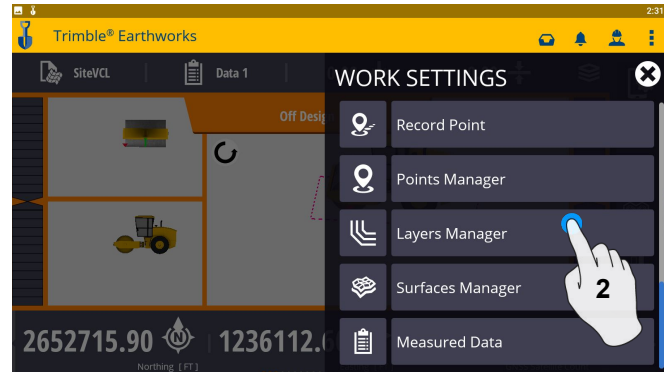
4. Select which Reference Surface(Maximum of 2)

5. Touch Apply

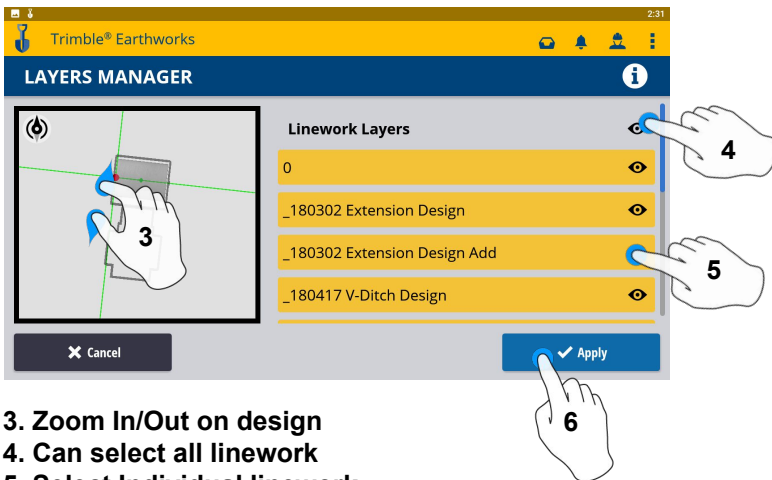
Layers Manager ** Will only work in VCL format Designs**



1. Touch Work Settings

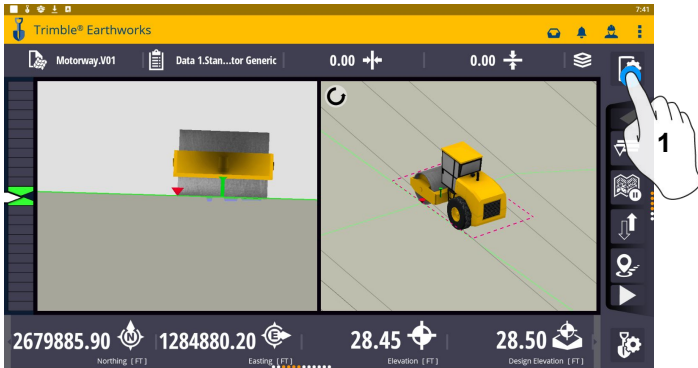


2. Touch Layers Manager

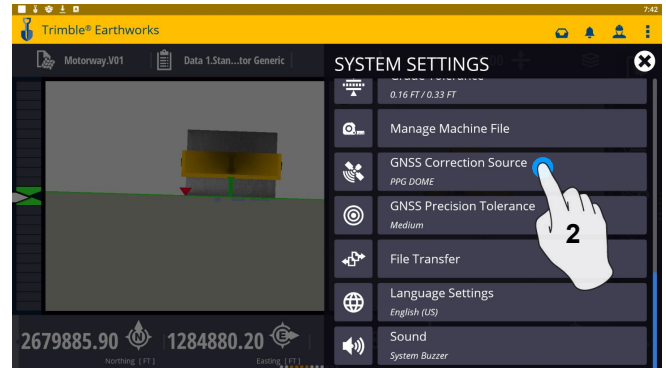


- 3. Zoom In/Out on design
- 4. Can select all linework
- 5. Select Individual linework
- 6. Touch apply once complete

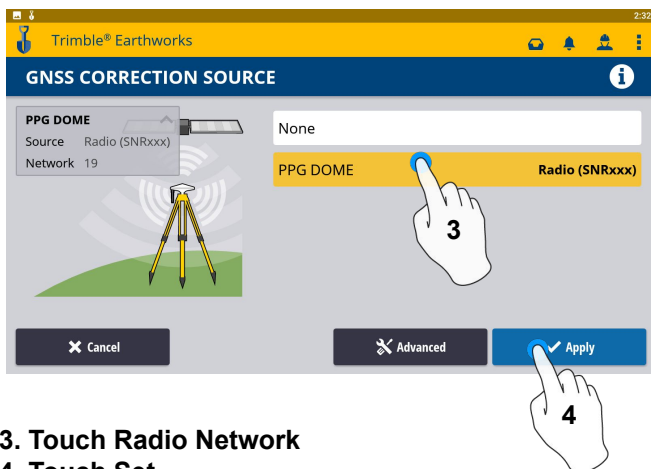
Change Radio Network



1. Touch System Settings



2. Touch GNSS Correction Source



3. Touch Radio Network
4. Touch Set



SITECH[®]

